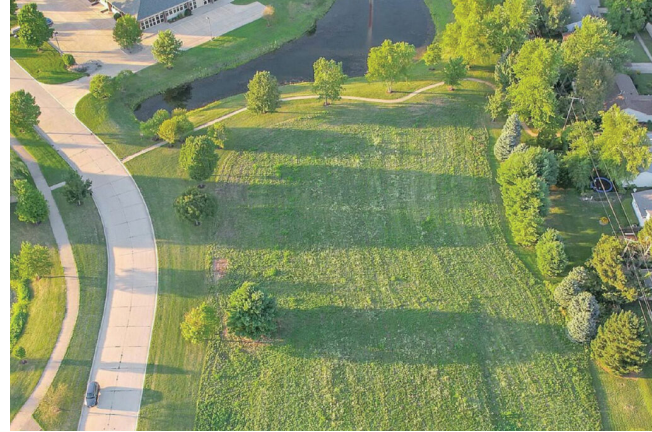


2810 BOULDER DR - OFFICE LAND

Offering a 2.03 acre lot within Stone Creek Commons in southeast Urbana. Located on Boulder Drive, the property lies within the Urbana Enterprise Zone. Stone Creek Commons is a Class A office park that includes walking trails, two ponds, mature trees and outstanding landscaping.

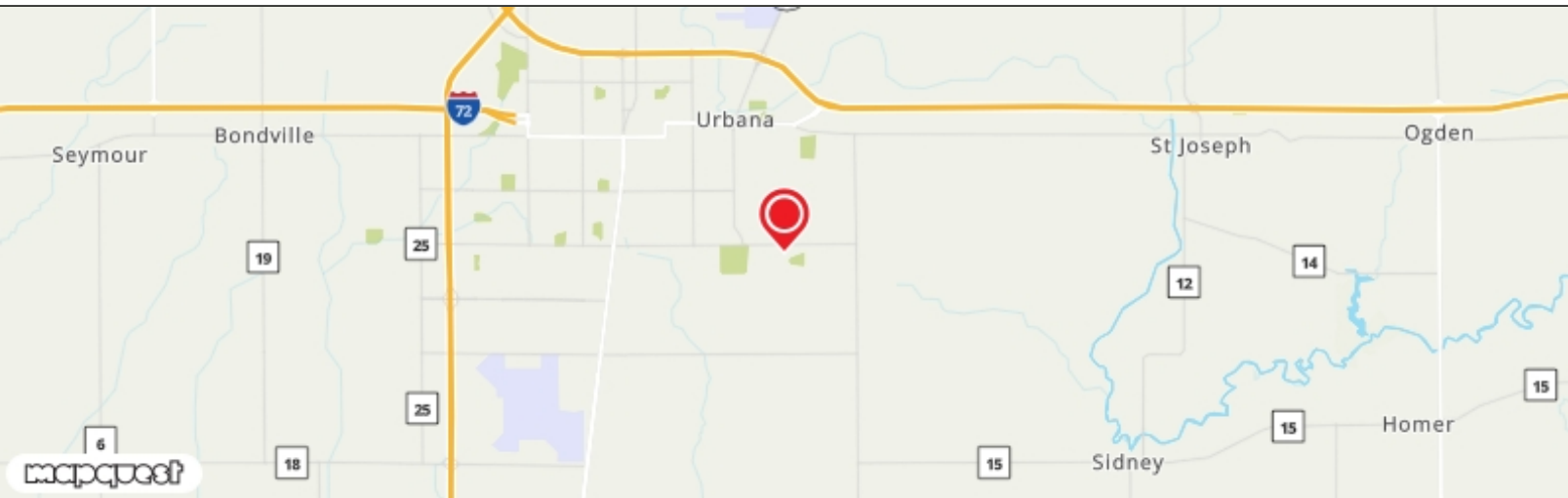
This commercial lot is located on Boulder Drive and is adjacent to an attractive pond. Build to suit options are available through The Atkins Group, the developer of the retail/office park.

[Realtor's Website](#)



Location:	Stone Creek Commons	Status:	Featured, For Sale
Price:	\$707,408	Available Sq. Ft.:	88,426.8
Address:	2810 Boulder Dr, Urbana, IL 61802	# of Floors:	n/a

Community Stone Creek Commons is adjacent to The Pines retail center, an upscale neighborhood center home to several businesses including Busey Bank, Monical's, Subway, Casa Del Mar, and many others. Situated on the Windsor Road corridor, other businesses in the immediate area include Carle Hospital, Christie Clinic, Meijer, Little Hearts and Hands as well as significant residential areas and including the Atkins Golf Club at the University of Illinois.



atkinsgroup.com | 217-367-2121

Web Address: <https://www.atkinsgroup.com/?p=35755>