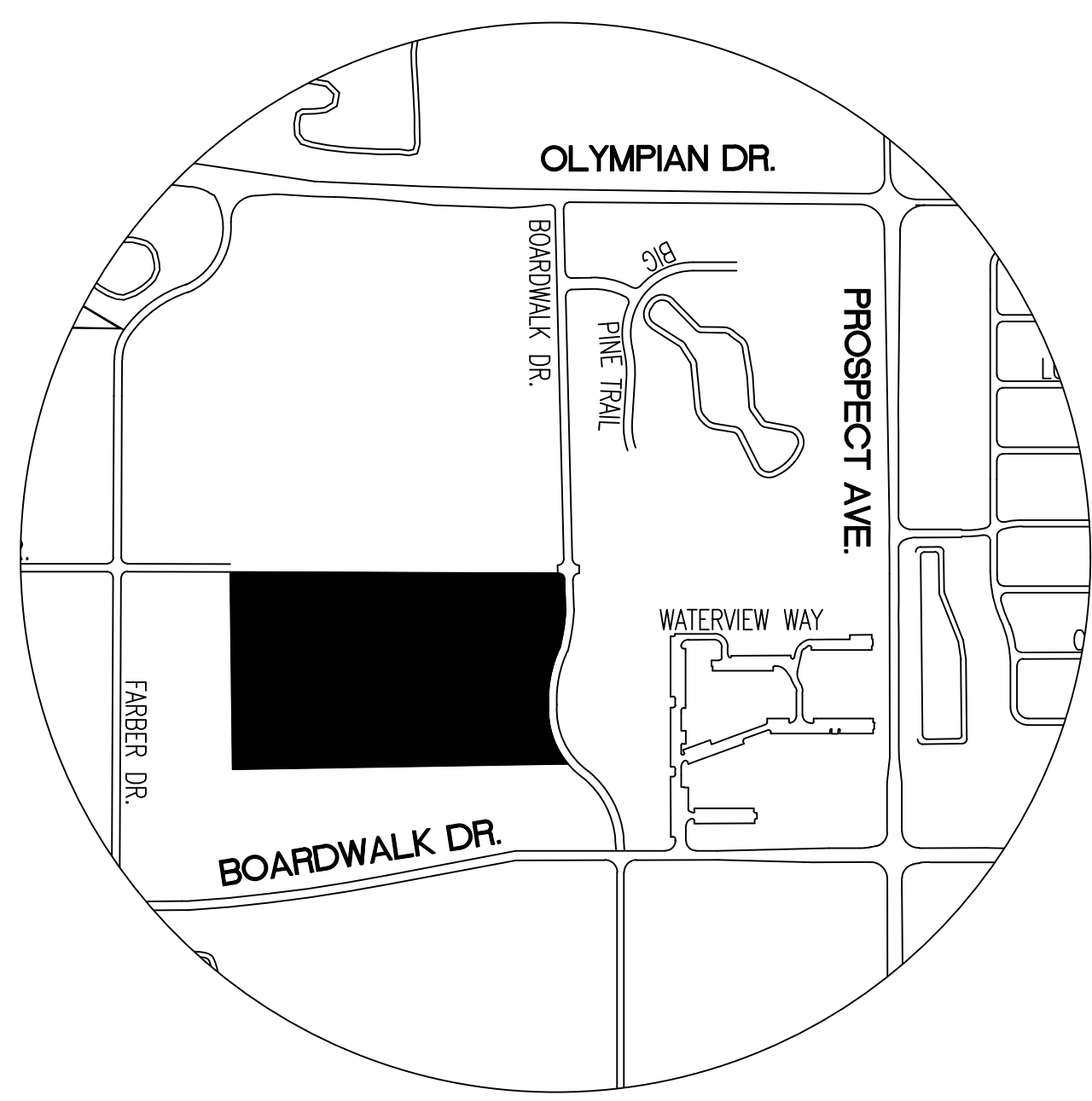
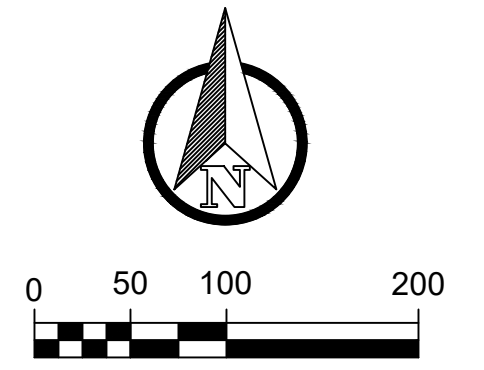


AREA GENERAL PLAN INTERSTATE EAST SUBDIVISION NO. 4

AN ADDITION TO THE CITY OF CHAMPAIGN
A PART OF THE EAST ONE-HALF OF SECTION 35, T20N, R8E OF THE 3RD P.M.
CHAMPAIGN COUNTY, ILLINOIS

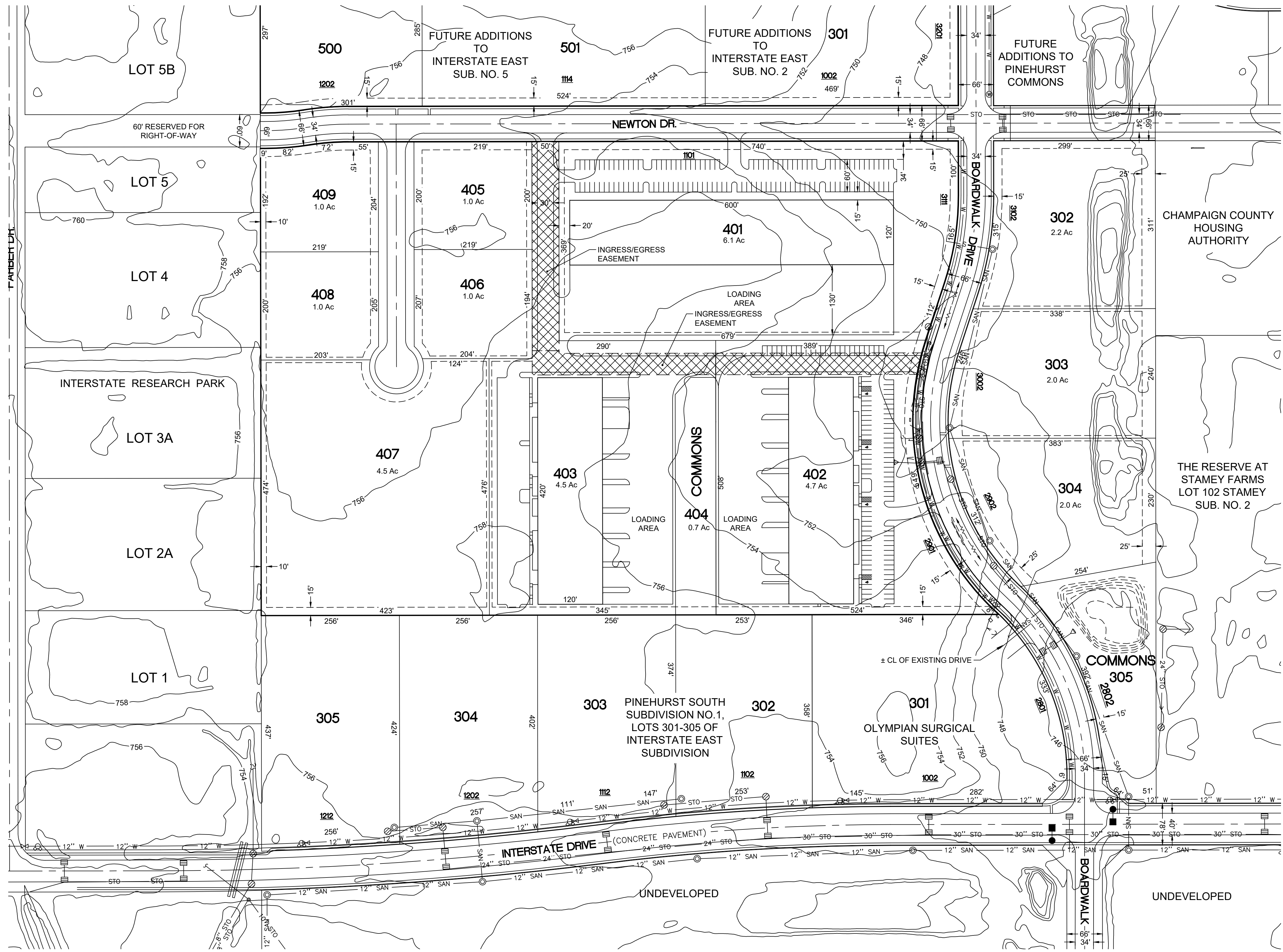
SUBDIVIDER/OWNER
TAG WAREHOUSE, LLC
2805 S. BOULDER DR.
URBANA, IL 61802

ENGINEER/SURVEYOR
PRECISION ENGINEERING GROUP, INC.
P.O. BOX 784
CHAMPAIGN, IL 61824-0784



LOCATION MAP

- LEGEND**
- BOUNDARY OF TRACT(S) SURVEYED
 - EXISTING SURVEY LINE
 - - - EASEMENT LINE
 - CENTERLINE OF STREET
 - STO STORM SEWER LINE
 - SAN SANITARY SEWER LINE
 - W WATER MAIN
 - (100') DIMENSION OF RECORD
 - 100' MEASURED DIMENSION
 - ⊗ WATER VALVE
 - ⊕ FIRE HYDRANT
 - ⊙ SANITARY MANHOLE
 - ⊗ STORM MANHOLE
 - ⊗ STORM INLET
 - 401 LOT NUMBER
 - 2901 STREET ADDRESS



File Name: C:\Users\User\Desktop\ACAD-10718010 ACP-Model.dwg

DATE:	03/13/18	SCALE:	AS SHOWN	NO.	1	DATE	07/12/18	REVISION	ADDED PARKING TO LOT 402. REVISED ACREAGE, MOVED BUILDING ON 401 NORTH	BY	MAM	<p>PRECISION ENGINEERING GROUP, INC. P.O. BOX 784 CHAMPAIGN, IL 61824-0784 PHONE: 217.607.9489 CIVIL ENGINEERING - LAND SURVEYING</p>	<p>AREA GENERAL PLAN</p>	<p>INTERSTATE EAST NO. 4 SUBDIVISION PART OF SEC. 35, T.20 N., R. 8 E., 3rd P.M. CHAMPAIGN, ILLINOIS</p>	<p>FILE # 10717007 SHEET 1 OF 1</p>
CHECKED BY:	MAM														
ILLINOIS DESIGN FIRM REGISTRATION NO.	184007585														